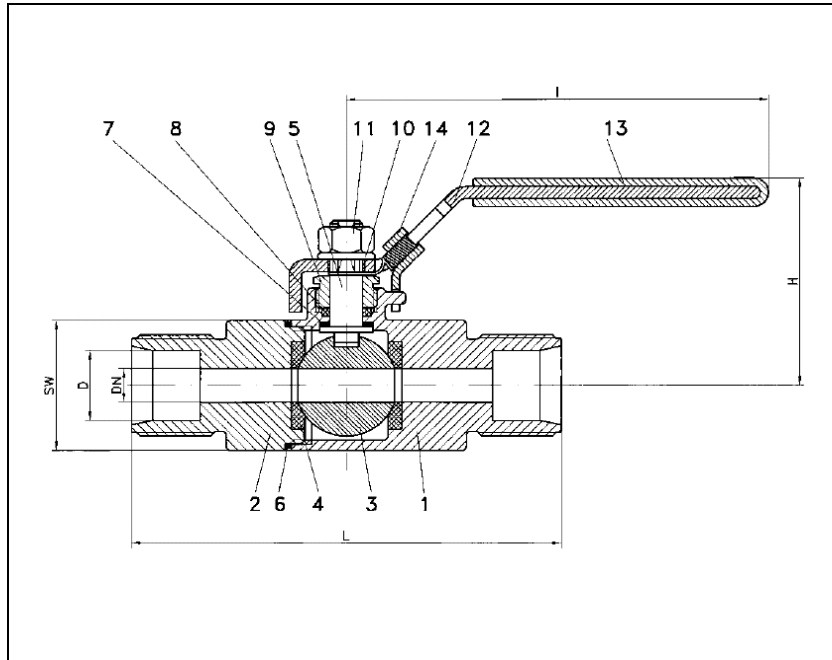


BALL VALVES RK-PROBALL

KH 2T K, DN4 - DN16, PN63



Ball valve with clamping ring connection full bore face to face acc. to DIN 3202 V1

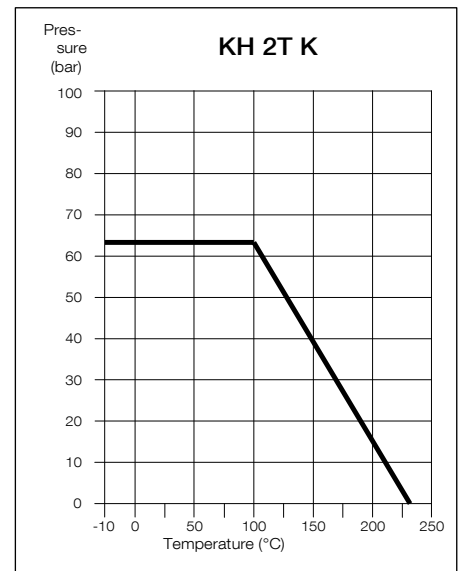
Specification:

Two-piece ball valve with clamping ring connection, full bore, blow-out-proof stem, body material lost wax cast stainless steel (1.4408), free of non-ferrous metals, seat KFG, stem packing KF, design acc. to EN 19, safety spring locking device is optional

Marking: RK-Proball
Type: KH 2T K-1.4408

No.	Part	Material
1	body	1.4408
2	cap	1.4408
3	ball	1.4408
4	seat	KFG
5	stem	1.4401
6	seal	KFG
7	thrust washer	PTFE
8	stem packing	KF
9	gland nut	1.4301
10	washer	1.4301
11	nut	1.4301
12	lever	1.4301
13	insulation cover	Vinyl
14	spring locking device*	1.4301

* special type



Ordering example:
KH 2T K, DN6, PN 63, 1.4408, safety spring locking device

Dimensions

DN mm	PN	dimensions (mm)				SW**	Kv-value m³/h	weight kg
		D	L	H	I			
4	63	6	76	50	102	22	2	0.2
6	63	8	76	50	102	22	3	0.2
8	63	10	76	50	102	22	5	0.2
10	63	12	80	50	102	22	6	0.3
12	63	15	96	50	102	24	7	0.3
16	63	18	105	52	102	34	9	0.6

** width across in mm

Subject to modification. 02/2017